

LEE O. MILES  
COLLECTION

M 5'9 - 4'9

Alimony Paid  
Cashed Bonds

J. M. ...

5.11.50. Garage - 1.00

~~Auto Garage~~

Sal Cash - 5.00 - at Key by Binnet  
" " " " " "

Spencer 1.00

EB 56. 59.

7-7

Al... Saturday (up to 2 mi)

Calamagrostis

Dryopteris

Urtica americana - juv

Polygonum - juv

C. ...

By PUC ...  
incoming tide, ...

On mudflats - blue, little sand & grey

90° - 100°

Collect ...

2.0

1.0

0.5

912 3.1-49

7-8-49 700.00

John Smith  
100.00

4 Salmon Trout

1.00 - 1.00  
1.00

Collected 3.00

Trout 1.00

Spent 2.00

Balance 1.00

Handwritten text at the top of the page, possibly a title or header.

Handwritten text in the upper middle section of the page.

Handwritten text in the middle section of the page.

Main body of handwritten text, consisting of several lines of cursive script.





1. Completed Cases - S. J. J. J.

Clay - Peat - Surface

Philopogon

Sarcocolla

P. ...

92 ... 43 ...

95 ...

In ...

P. ...

C. ...

S. ...

93 - One S. J. J. J.

P. ...

P. ...

P. ...

C. ...

Th. ...

M. ...

C. ...

F. ...

P. ...

P. ...

P. ...

B. The ...

From ...

... Eudistylis ...

E1338

8.1

W. Emerson

7-9-49 530 500

Sandy beach, N end of Duck  
Park Cove, Vt. rocks.

Rocks clean, unbroken, all  
large gravel. Up to 10" and  
most is white

Scallop only

Sp. 13

Case 2.5

Travel 1.0

2.5

Spec. 2.5

6.0

to  
C100

Full Review

(You should have 500 pages)

1/2

Shrimp

Worms

...

...

1/2

Notes - ...

...

EB 39-49 H. Lawrence

7-10-49

Just for information  
L. Lawrence

Albion Bay

Fish Harvest taken

Exp No. 10

7-17-20

And ...  
...  
100

... 11.0 C  
... 11.0 C

...  
...  
...

Col. 20

1  
38  
515

Car 102

Family ...  
Van ...

g. 5

Helicoverpa ...  
" ...

Cyrtopogon ...

Acrida ...

Delia ...

Blepharidopterus ...

Pezomachus ...

" - small ...

Worms in ...

" ...

Crab ...

Diptera ...

... ...

...

...

...

EB 41 Specimens 3.5 hrs  
Feb - 0.5

07.13.49. 5<sup>30</sup> AM - 11<sup>30</sup> AM

Boat 1/2 hr east. Fished in 30 hr bay

Shore reef of tilted limestone  
limestone & shale. Col 110

Air 12°C SW water 11.0°C

g<sup>3/4</sup> - *Nematostella* ... 2 sp.

g<sup>1</sup>  
Thin limon

*J. marginata*

*Majidulus californianus*

Fish in isolated tide pools 2-2  
caught by hand net.

g<sup>3</sup> - On sea column - outer edge reef  
various acorn { ... }

Rocks with { *Worms*  
*Bryozoa*  
*Hydroids* - 2 } g<sup>3</sup>

Crabs - 2243

*Logophanes*

*Gracil pinnatus*

g<sup>3</sup> *Pachycheilus rufus* & *pubescens*

" *Hydrobia* ... *concinna*

g<sup>4</sup> Coral - *Blasiphylia elegans*



Poult. Area -

Q  
20.

- Flora
- Perennial - (Spermatophyte) 2 species
- Phyllocladon pedunculatus
- P. panicea
- Diplodonta orbella (Spermatophyte)
- Botula falcata
- Hippocrepis

Q 3

- Tarpea - on rocks at edge of lake
- Diadema regium
- Yarrow
- Acanthopanax nitida
- " " with bicolorate in
- Jugosa Brunnea
- Callitriche costata
- Senecioidea dura
- Papilio stramonium
- Amphispiza bilineata
- Trichostema
- Oreophila (plum)
- Thalictrum flavum
- Purpurea foliata (altroquin. D. G. G.)
- Margarita
- Leptostachya
- Accumaria. Miniat. 40

EB42

7-14-49. 7:30 am 11:30 am

(Sampled 1/2 hr to 1 hr above river level)

Rocky S. shore where mouth of  
river merges with ocean - upper  
end of Continental Shelf.

Loc.

Air 13.0° SW, 13.5° C

Specimens 2.0 lbs.

4.0

6.0 "

8.0

10.0

Mouthellia R.

June

3 This ... ..  
rocks, but large colony ... ..

2 This ... ..

392 A. ... ..  
A. ... .. etc

3 Ophi. ... ..  
Petrif. ... ..

2 Pachyprogon

Tegular ... ..

T. ... ..

Common

2 Isopoda (5)  
worn

3 Mouthellia ... ..

... ..

... ..

... ..

3 ... ..

... ..

... ..

EB 43-49

7-14-49 100 P.M. - 300 P.M.

MB 75. lunch & Home. 4 d. edge  
of river. 21 miles. 4 bowls

1-3 miles 0.5 hrs 1-3

2.5 hrs

100 bowls

Albino Boy -

*Albivitta peruviana* (Linné)

*Albivitta peruviana*

*Neosaxonia peruviana*

Spotted

(*Albivitta peruviana* - *tricolor* form)

Anthropod

Isopoda

Cnidaria

Worms

Eggs - on eel gills

*Isopoda*

Eel gills - with eggs on it

Found in eel gills - found in

EP 46. 49

• 7-15-49; 8<sup>00</sup> am, 9<sup>15</sup> am,  
plus 1.0 travel time.

Car 1<sup>00</sup>      2<sup>00</sup> hrs

Temp. Air      5.0  
at 8<sup>00</sup> am.

Rocky point, ...

Temp. 2.0

Temp. 1.5

4.5

Car 1<sup>00</sup>

Little River Beach  
S. side bay

3 & 4 April 7

*Rostanga pulchra* - 1000

*Blennius*

*Chirocentrus*

*T. ...*

*T. ...*

*Crepis ...*

*Sarcophaga*

*Callinectes*

*Crepis*

*... ..*

*... ..*

*Pogonocherus*

M 61 - 49

1 - 18 - 49 ; 5000 ft. 1/2 mi

See also 1/145 + 1/16

March 19, 49

Low water - 54 ft - 1/13

Calc. 7/13

Low water

Calc. 1/13 - 3/10

1/13 - 3/10



Pier at Little Bridge Bay  
W. Wetly sand & mud

Pilumnus

Corbicula

Alpheidae

Penaeus

Crustacea

Solen

Squilla

Callinectes

Libinia

Decapoda

Fish - 3 sp.

Amphipoda

Polychaeta

Hydroids

Actinia

Periwinkle

Pro. Mollusca - Navanax

Asterias

7/16/49

7. 7/16 - 49

Drain to the bottom

Low water 5:30 P.M. - 1.4'

Collect 5:30 - 7:30 P.M.

Final 1.4'

Low 5:30

7/16/49

Paris - 1871

*Cynoglossum* *officinale* L.

*Plantago* *major* L.

*Althaea* *officinale* L.

*Pulsatilla* *nuttalliana* (Mill.) B.S.P.

*Thalictrum* *flavum* L.

*Lamella* *terrestris* L.

*Urtica* *dioclea* L.

Worm

*Notonecta* *tenax* L.

*Clypeaster* *reticulatus* L.

*Ciripedium* *pubescens* L.

*Adiantum* *speciosum* L.

*Polygonum* *lanceolatum* L.

*P. aviculare* L.

ML 63 - a

1 - ... 1:30 PM - 5:30 PM  
 2 - Travel time ...

Puff #1 2:00 PM. Off outlet (E) ... North ...

2 - 3 ...

#2 From Big ...

1 - 3 ...

#3 Straight out direction of channel, ...  
 Customer Inlet, ...

3 - 5 ...

3.5

4.0

4.5

5.0

...

See spec ML 64

Beating - 100 yds long

#1

Alvella petrona - many  
D. duplicata " - skull, several  
Pentacula, abacanthous, few sand &  
Nereis

#2

Alvella petrona  
Fish, 2 sp. few - Sole like

Shrimps  
Small ones

Small ones - 3 or 4 spec  
Gobies

Small ones - few

Octopus  
Alvella - 2 species  
Shrimps - small

Nereis - 2 sp

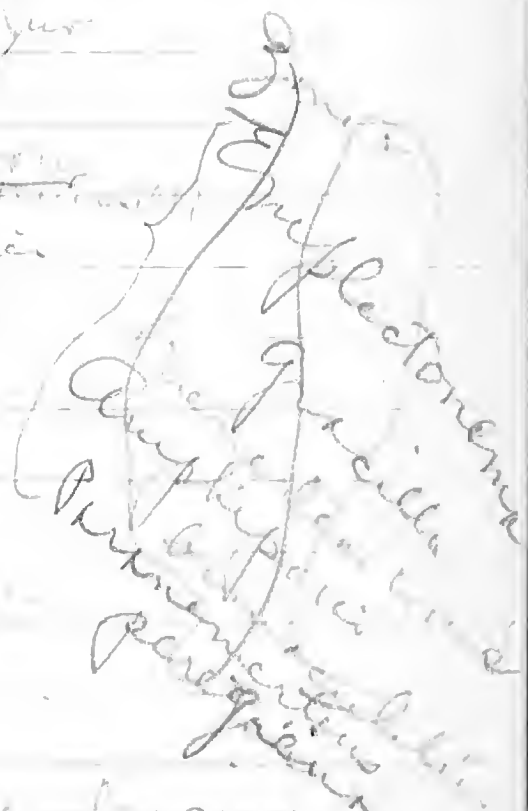
Alvella 5 or 6 spec

Small - 3 or 4 spec

Pentacula, abacanthous

Polychaetes  
Festuca

Worms



Mild

9-27-69

6<sup>00</sup> - 9<sup>00</sup> am

front 0.5

Spec. 4 low +

Car 100

200 / 100  
200

George Rogers  
D. Jones before Feb 4 1847.

Received of George Rogers  
the sum of \$100.00 for  
the purchase of land

in the town of  
New York in the  
County of New York

for the purpose of  
the purchase of land  
in the town of

New York in the  
County of New York  
for the purpose of

the purchase of land  
in the town of  
New York in the

County of New York  
for the purpose of  
the purchase of land

M 63 Cont'd (b)

Outgoing

#4 Just right of course from Island  
Smith's gull. 3-5 fathoms  
15 minutes. Fine grey sand

#5 Return toward Island on return of  
course 4. 3-6 fathoms  
15 minutes. Fine grey sand

#6 At Buoy, S + E.  
3-5 fathoms

#7 Jettied out around Buoy, 1 m  
4-5 fathoms

#8 Buoy into Enticement Island.  
4-5 fathoms 15 m

#6 Fish  
Olivella sp. & veg. Grey sand  
moss. Sponges  
Crab (Mermis?) 15-20  
Lepid. alba  
Diatoms etc



M63 cont'd

#4

Shrimp  
Worms  
Hermit  
Small *Leptochloa*  
"Worm like" ?

#5

Alivella sp. 4 per  
*Proanion togata*  
Shrimp  
Peleagrade  
Cancer sp. 1 per  
Worms  
Large *Leptochloa*  
Dendroica *evoluta* 1st size  
Aliv. sp. 1 per

5 Fresh  
Sample

#7

Worms  
Alivella sp.  
Dendroica *evoluta*  
*Proanion peripateticum*  
Alivella with hermit  
Cancer sp.

Wet Fresh  
Sample

#8

Worms  
Dendroica - all sizes  
Cancer sp.  
Alivella sp.  
*Proanion peripateticum* (7/11)

Fresh  
Sample

7-28-49

7-28-49; 6<sup>30</sup>am - 10<sup>00</sup>am  
PM 7<sup>00</sup> - 0.9'

Sand beach, rather fine,  
clean sand; among  
boulders.

Boulders, with <sup>much</sup> washing  
and similar to others.

Collecting	3.0	h.
Prep Spec	2.0	"
Food	1.0	"
	6.0	"

Cost 1.00

- 3 ✓ *Conus magister*
- Dermasteris subricata*
- Nemertea* (some specimens)
- Euplectonema gracile*
- Paramonacis peregrina*
- Diphysa* (some specimens)
- 2 ✓ *Polysiphonia* (some specimens)
- 2 ✓ *Agardhiopsis* (some specimens)
- Agardhiopsis* (some specimens)

Shuttlecock Gulch -  
 (near 3rd St. San. Col. Bldg.)

Q 3  
 # 4

Spongia - yellow, ball  
 Glaucosiphonia - numerous  
 Puffball  
 Gelidium  
 Peltella

Elaphoglossum  
 Tubicorina  
 Comp. baculum  
 Green, dark, small, ball, numerous  
 Tubicorina - 2 sp.

Acropora gelida  
 Acropora - small  
 Siphonophora sp.  
 Siphonophora  
 Eudactylopsis

Pycnogonum pedunculatum  
 Patella - numerous  
 Patella - small  
 Patella - large  
 Leptocarpus  
 Chitonids

Porosiphonia  
 Pycnogonum  
 Pycnogonum  
 Pycnogonum  
 Pycnogonum  
 Pycnogonum

Q 2

M 66-4

7-29-49; 70000 - 103000  
micelidion

Went out south of Pt. ...  
then from Bridgeway along  
Channel to marker ...  
Exp. at water level ...

For water 39 am - 0.4

Spec. 2000

Q. 100

*Callinectes californiensis* with  
*Callinectes granulata* ...  
*Callinectes* var *convergens* ...

Pier at Dora (K. Poles)  
To Sigurd 12

Hesperia adriatica (5/10)  
Sclerophaga quadripunctata (1/10)  
Pieris - common at Dora

Hebena  
Clypeus rubiginosa  
Pieris  
Dora

Circeia - 1/10  
Dora

Pieris - 1/10  
Dora

Hebena + Secta  
Pieris - 1/10 (in Dora)  
Dora

Pieris - 1/10  
Dora

M 6/1 - 19

P. 20 - 19

Collection	0.5
found	0.5
Spec.	1.0
	<hr/>
	2.0

From Tide Gauge at  
mostly from 11 to 14, Berkeley  
+1 to -2 feet marks

*Pinus strobus*  
*Betula sp*

*Corylus*

*Quercus*

*Nerax v. villosa*

*Totipot. Kalosydus*

*Amphisp. sp.*

*Onch. sp.*

*Microgaster*

*Staph. sp.*

*Limn. sp.*

10/68-89

8-3-89

Loaded gear on boat 1:00 - 1:30 P.M.  
Travel to Isles. 1:45 P.M.

A drag, no bottom, 100 yds. long, 10 ft. wide  
#1 2:00 - 2:10 P.M. From 100 yds E of base  
end near 30 yds. long, 10 ft. wide  
100 yds. from line from 1 out. end in jelly.

#2 From end of 1st drag. 2:15 P.M. 2:30 P.M.

Full haul for today. Poly. material  
#3 From 100 yds. beyond Stempel Cr. 2:35 - 2:45

no bottom - too rough & deep. Poly. material  
#4 From off 300 yds. below 4 in Cr.  
but still 10 ft. from beach 3:20 - 3:35 P.M.  
Grey sand - very fine.

#5 From line Island 18 feet P.M.  
Toward light of Isles. 3:40 - 3:50  
Fringing sand, minor mud.

#6 From halfway between Basin & Shire  
off 100 yds. toward light.  
Full haul. 4:00 - 4:15 P.M.

#7 Toward light of Isles. 4:25 P.M.

#8 Toward light to opp. Culver's  
4:35 - 4:45 P.M.

#9 4:30 - 4:50 P.M. From Island  
L. of P.M.

P. 5:00



Drinking from "Juvies"

Capt. Lee ...

#1 Water ...

#2 ...

#3 ...

#4 ...

#5 ...

#6 ...

#7 ...

#8 ...

#9 ...

#10 ...

#11 ...

#12 ...

#13 ...

#14 ...

#15 ...

8.5 M. 69-49

From 2:00 P.M. leaving S. ...  
Return 6:00 P.M.

~~King~~ Water, 2001. ... 23.2

A. ...  
On road ...  
and ...

B. ...  
...  
... Club.

Cost 1.00  
...  
Prep. Spec. 50

Air 53° - 7  
5.15 61°

Jonathan Bay -

A - Nest, <sup>11</sup> Dupont Co.

Auricularia sp. Warts! ashiness  
in quantity

St. Pauliella

Amphipod

Lageoda caudata

Polychaeta sp.

Thalassidroma sp. (Quana)

Balanus

Cerithium sp.

Amphipod

Mytilus edulis

Adamsia lineata

Sea Anemone

Polydora

Alpheidae

Neomysis

11

Hemigrapsus

Ampelisca

Boring bryozoa, probably

Penicillium sp.

7m 70 - 49

8-6-49: 5<sup>30</sup> am - 7<sup>00</sup> am.

2.0 - 1/2 hr

Car 100 Spec 2.0

2.0 - 3<sup>30</sup> am - 1.0

Went to see area drain before  
collected, and to see if possible  
come up in channel where could make.

Since - Shovel.

See notes. See M.

Clear clay, little sand, about  
1/2 in. in spots.

Spec 2.0

12, Lago Pangu  
Zinnia Cypripedium

A On a ...  
72

Herminium

Trichostema

Leucostictis ...  
not at all ...

B On a ...

7 Est. ...

Cyprina

Vermetus sp.

Girardinia sp.

Polyschista ...

Herminium ...

Pachygygia ...

Balanus sp.

Mytilus ...

in California

Cardium ...

Stidomus ...

Venerupis ...

Trunculus ...

Schizothaerus ...

Acantha ...

Mopalia ...

Ostrea ...

Mollusca?

8-8-49

Fuel 1.00

P.W. 4:55 am. -0.9'

On outer edge of S  
Side of "S"  
See also in collection.

Temp. of 30m Air 53° Fahr  
Water 52° Fahr. at same  
depth 50° Fahr. at same

Spec. 20 hrs.

Zone 1 - Crab for identification

Presence of *gobrius*

- 93 Crabs { *Cancer antennarius*
- { *Pilobolus cinclipes*
- { *P. erinaceus*
- { *Hoplostethus Cavivorus* (Willm.)
- { *Pagurus* sp.
- 94        { *Helicogramma* sp.

Washed up on beach -

*Polysiphonia pennicillata*

- Zone 1 *Agaricus digitatus*
- Thalassia*
- Filiformis Scottellii*

July 11, 5, 1903

June 3 - *Caraculua* sp. All

*Bryozoa* *... ..*

*... ..*

*Caraculua* *... ..*

*Clavaria* *... ..*

*... ..*

*... ..*

*Parinemertes peregrina*

*... ..*

*... ..*

*... ..*

*... ..*

*... ..*

June 23

*... ..*



*See ... ..*

8-8-49 - 7:30 am - 11<sup>00</sup> am

Out Cliff cut from "Ella"  
to road cut just from  
mouth of East River. He  
"Three Car" at 3th place

Spec 1.0 hrs



Jan 7 1959

Bohaya Bay - Papua

Lepus sp? Ground squirrel  
from central forest.

Neris dekulleana with others

Dipodomys forsteri, Peromyscus  
skinneri, etc.

Pisaster brevivirgatus

Canis procyonides only seen

in mangrove

Jan 73 - 59

8-9-59 : 5<sup>00</sup> am - 8<sup>00</sup> am

Travel - 3 hrs.

Cost 1<sup>00</sup>

A - [unclear] [unclear] for [unclear]

B - [unclear] [unclear] for [unclear]

C - [unclear] [unclear] for [unclear]

D - [unclear] [unclear] [unclear]

E - [unclear]

Five miles - 5<sup>30</sup> - 0.9 - but is  
about 1.0 miles here.

[unclear]

Trinidad Bay

S. of P. Bay, Dept. of C. B.

June 2

1 *Caprellidae*

2 *Argulus californianus*

Worms

*Sipuncularia*

*Chironomus*

3 C *Polydora* sp.

3 P. sp?

4 D *Squilla* sp. sharp point of great

5 *Brachyura*

6 *Caprellidae*

3 *Hydrobia ulita*

*Osleria leucida*

*Scapharca* sp.

*Arca* sp.

*Urosalpinx* sp.

*Blanus* sp.

*Squilla* sp.

*Junco*

E 4 *Hydrobia*

*Hydrobia californica*

*Hydrobia ulita*

*Hydrobia*

7/11/74

Aug 8/15/74 sat. 3:30 - 5:30 pm

Travel 1/2 hr

Specimens 1 hr.

Car 1<sup>00</sup>

Temp. S.W. 4<sup>00</sup> P.M. 13.0°C

June 14<sup>2</sup>. Point Arena  
shale reefs.

L.W. 3:30 am. 4

4 you

Point Curran

Reef pools 5/14

Mostly under lava rocks in edge of pool

Virgata

Comma on out of pool. Euphr.

Regula formosa, 4

Thais emarginata

Murex

Acte. chit...

Pistolaria sp. many

Acte...

Acmaea fella (Schubert)

A. digitalis (Ridgely)

A. scabra

Polydora

Point Curran

Small red Sea Anemone

Bryozoa

Chitons 3 or 4

W. sp.

M 75

8/21/22 - 9:00 am - 5:00 pm

Travel to base \$100.00

Spec 700 hr.

8/22/22 - 9:00 am - 5:00 pm

Travel to base

8/23/22 - 9:00 am - 5:00 pm

Point ...  
Kear

*Acronyctus* ... 9 1  
*A. digitalis* 9 14 2  
*A. nitens* 9 3  
*A. pella* 9 2  
... 9 14 2  
*Acronyctus* *nitens* 9 5 2  
*Acronyctus* ...

*Brachyura*  
*Callinectes* ...  
*Libinia* ...

*Palaeomonetes* ... 9 2 3  
*Libinia* ... 9 1  
*Callinectes* ...

*Libinia* ... 9 3  
*Libinia* ... 9 2  
One in open on rocks.  
*Libinia* ... 9 2

Mar 26 27

5:00 - 5:30 - 8:30 am

Travel 1/2 hr.

Spec 3 hrs

at 100

Prof. in 10:00 to 11:00 am  
Prof. in 11:00 to 12:00 pm

In 10:00 3.



Point Arena

Reef

Quaternary

St. George's Reef  
N. California

Point Arena

Point Arena  
California

Point Arena

Point Arena

Point Arena

Point Arena

Point Arena

Point Arena

Point Arena

Point Arena

Point Arena

Point Arena

7/11/08

5/23/09; 500g - 1700um  
One pound bars in pieces.

Journal 1/2 hr

Spec 1/2 hr.

Out \$100

See notes in the same  
place

Bodega Bay

Jetty pier sand bar.

2 *Polinices lewisii*

1 *Schizothaerus nuttallii*

*Venerupis nuttallii*? Juvenile

*Cardium costis*. young, 10/19/90

Octopus.

M 9/8 - 49  
8:30 - 49; 6<sup>00</sup> am. 8<sup>30</sup> am

On & among rocks 1/2 mi  
n. of mouth Johnson Creek.  
Much loose fine granite sand.  
Rocks up to 70' diam.  
Open sea coast, but outer  
reefs give there in June 3  
much protection.

Sat. 11.5<sup>10</sup> C - 8<sup>00</sup> am.  
Cloudy.

N. of Johnson Cr  
Rocks

2. ~~Crinoid on sand, from algae~~  
~~on beach~~

3. Brown coralline

4. Red "

Sponges. Red coral.

Brown coral  
yellow stalked sponges

Hydroids

Polyspon on algae

5. ~~Needle coral~~

Sm. red on broad leaf algae

Large yellow, black coral

Red coral

Large flower, red legs coral

6. ~~Large coral - black, flat on beach~~

7. Archaeolites red coral

Knobby

8. ~~On sand - coral~~

9. ~~Black coral~~

Broken coral

On brown algae -

Sponges

Hydroids

Sponges

Small coral

Sponges

Yellow coral

M 79-49

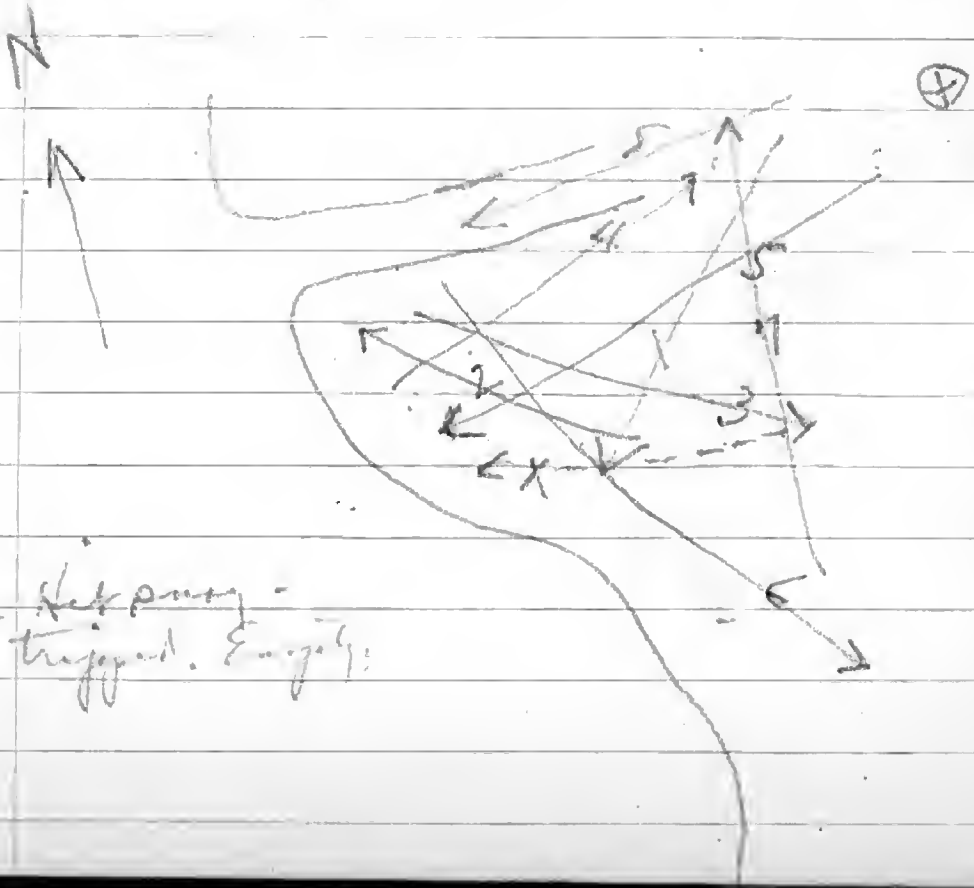
9-29-49 11<sup>45</sup> AM 14<sup>5</sup> P.M.  
Plus 1 hr travel time.  
Bout hire 5<sup>00</sup>

Quiles Bodega Bay between  
Jetties. 1 hr. 1/2 distance  
2.925 of S. Jetty, between  
4. Bodega Bay

S.W. 12.0°C at 11<sup>45</sup> AM  
11.0°C at 1<sup>30</sup> P.M.

Point like 12.00 M + 3.4'

Clear. Dredging at 11<sup>00</sup> AM to stop work  
for now. In 11<sup>30</sup> AM.



X - Net party -  
tripped. Empty

Depth

Brakeys Bay  
Antarctica

1. From midway between Bury & Getty, S.W. into light.

*Orvella bigluta*

Small dollars<sup>Juv.</sup>

*O. siderosa*

Flounder

Nossaries 2 sp.

*Actaeon punctoculata*

Baby clam *Cardium corbis*

2 Shrimp species

Juv. conical

Isopod (like row bug)

#2. see map.

Small plus & *Pyrosoma*

& small worms.

#3 As above

#4 " "

#5 " "

#6 " " plus juv. 'Red Fish'

#7 " " plus Bryozoa on  
algae. Also 2 *Psidium* beryllium.

#8 As above.

All bottoms grey sand.

All depths 1 fathom to 3 fathoms.

M 80

10-12-49

After SE storm  
reworked by wind

On S. side of beach,



Salmon Co.  
Beach

Bygonia on algae

Hydroids on Kelp

TK 81-49

10-20-49

meth. surf.

Low water 11:00 P.M. + 0.1

with J.C. & P.C.

Mussel Point

m 82.49

10.21.49

Good water - 0.6 at 4<sup>40</sup> P. m.

Point Arena  
Reef.

m 83-49

10-22-49

From notes 5<sup>36</sup> P. M. - 1.1

Collected for Jerry Williams  
mostly 1 r.o. box.

Inlet to  
Bakea Lagoon

On sand flats at Port Pier.

U. Plumicea

Cardium corbis

Macoma nasuta

Chamaelea duplicata

~ Octopus

Schizothaerus multicolor

Callinectes

zone 2

Dendrocaulus

2

g<sup>3</sup>

M 84

11-17-49

On sand ground flat  
with shaly clay any  
any of the area

at 3:00 P.M. - 0.1

collected 1 hr.



Bolaga Lagoon  
near Meredith's

*Stomatopoda* nittallii

*Penaeus* leucostulus

*P. scaber*

*P. personatus* - up to 100  
of small jills

7th 85'

- 11-18-49

Read 3<sup>50</sup> PM - 0.8

Low water.

Shortland Gulch

Mosses { Palisades } & present  
          { 2000 }  
          { 1000 }

*Prototrichum stramineum*

(Vancouveria)

*Acanthopogon pulchellus*

on the ground

*A. cinereus* on *Eryngium*

&c

M 86

11-19-49

Row 4 35 P. M. - 1.0

Beautiful grass!

Spring -

Shell beach park

*Acornus fenestrata*  
tc

Chiton

Mutabonach

Urchin

Podiceps

Worms in tubes

7. 04

1. 01

1. 20 - 4. 9

Bus 5. 20 P. n

- 1. 7.

Campbell Beach  
~~Wendell Cove~~ (North of  
Spring)

Abalone

*A. nutra*

*arguta*

*Dargula* *arguta*

7/88

11-21-49

~~11-21-49~~



Dredge - 0777 Row

Dredge at 120 feet

to 1000 ft & kept at 1000 ft

perhaps not from boat

Keep in mind

Keep in mind, but not to be

M 89

11-30-49

12-2-49

Arch

12/2/49

Summer area

Baker, August -  
To Campbell Co. N.C.

Polemonium  
~~Protophaca~~ ~~Stem~~

Protophaca stem

Miconia nasuta

Dryopteris

Podilobus - Fronds of  
Protophaca

Cent. - Corbis

Solidago nuttalliana Small  
White Sea Camp.

Polemonium

11. 90

9 11 - 30 - 49

P 2 - 1.1.1.1.1.1.1.1.1.1

1890. Shore Camp

Hydrozoa - *Hydractinia*  
- or *Tubipora*

Mertensia - *Mertensia*  
Comp. *ascidum*.

Abalone shells.

No. 91 - 49

12 - 3 - 49

12 - 3 - 49

12 - 3 - 49

12 - 3 - 49

12 - 3 - 49

12 - 3 - 49

Shell Beach  
South East coast

Quartz

New species, crin. below  
middle of clay

W 92

12/10/49

Paul, Sam

12/10/49

Sam 581 10/10/49



Numbered plates

File fish

22-93-49

11-13-49

Left 11:50 am + 2.0'

Collected at 2:30 P.M.

Russian R.

N. of entrance, near "E" Box

*A. penetrans* - in  
of 3 & lower, on smooth  
plane, fine grained greenstone  
on n. side (sketch) & near  
it in edge of emb. Most  
abundant *Acinua* this side of.

*Isopoda* - 4 large of 2  
smaller fossils, not on *Isopoda*.

Mad

12-14-79

Pray boat

Stomach S.E. of ...

also dugged out ...

Rain, ...

To 40 fathoms off Tomble  
Head  
Jefferson

2 juv. rays - many large  
ones taken (7' across)

1 Tom cod. Only 1 taken

1 Canary Sole

1 English Sole

✓ Blow fish - coppery,  
with belly pattern. Many  
taken

Some Pol. taken; also  
200 ft crabs in only bag made.  
Only 6 sand dabs  
& few petrale.

M 95-49

12-16-49

LJ 2:55 P.M. - 0.1

Hide like pond & rocks  
just W of NE corner

H S Cove -

Week 11.

Octopus

Principis

Abilma - H. rufescens

Deodora

Deodora in Col. tuba

in Galapagos

Gelatin

No 96-50

12-17-49

L.D. 3<sup>40</sup> P.M. - 1.3'

Rocks & pebbles 1 mi. N.  
of mouth River R.  
just  $\frac{1}{2}$  mi S. of "E" Road  
Some coarse granitic sand.  
& greenstone matrix.



Russian R. north.

Amur

Pravda?

Octopus

Chiton

Amur, ~~in~~ <sup>in</sup> abundance

A. mitra, large

Crabs (large, small, <sup>small</sup>)  
Murex, <sup>plata</sup>

Clay fish.

Small shells.

Neobranch.

Hydrozoa

Small gastropods

Isopods

Shrimps

Amur palawan

m. 97-49

12-18-49

1-24-50

Shell Beach  
no sub.

- Red finger sponges  
alt red short sponges  
Comp. Ascidia  
Chitons
- Hydroids
- A. mitra - large, encrustal.
- Corallines on shore  
~~no~~ - stalk-like tubes
- Pleurogastera

m 98-49

12-20-40

Millon Beach

Anchorage & Clam flats

93 ✓ of Thais labialis

Medusae - Rhodomonas?

- M. coronata

- " maculata

- " (rotunda?)

- Actinon

Cardium corbis

Water: ~~Thalassiosira~~ "Sea squirt"

- Sponges

Bill & walking on tide flats over  
mud. green, Echin. 9c.

White Crab / in rocks toward Stang

M 99-49

12-2-49

N.S. Cove - A. C. Williams

Chitons

Bench -

Hydroids

Many other small

invertebrates

M. lobata

9



Dorcas -  
Sand flat

Crabs -  
Pagurus  
Cancer (Hairy)  
" Blue claws  
Cardium

Sargassum  
on mudflat E of  
Pier - "Where found  
So many Portulaca  
& Callitriche

Fish - N of Pier,  
low tide - several  
seen

M 101 - 50

1-16 + 1/3

Foot 4<sup>10</sup>r. - 1.5

M 101.5

1-17

# Wicks' Cove

- v Sponges

Hydrozoa

*Physalia physalis*

*Protophaca staminea*

Cystes

*Physalia physalis*

Worms in tube

*Physalia*

Jelly fish

*Physalia*

## Fish dock -

parasites on rubber

" " " " "

needed present on 210

10 1/2 - 50

1-17  
x 1 - 16 - 50

Feb 17, 05 1.1

Dec 11 1903

See list of fish in ...  
See ... in ...  
P. ...

See  
103

(This ... (see ...)  
...

...  
...  
...

See  
103

(...  
...)

Cockle - some Card ...  
Shrimp

Bottle ... - juvenile

Octopus  
~~fully fresh~~

1003

1/25

For 11<sup>00</sup> am 1.6

148 Core.

Entolium  
mytilinum

m 104

1/25



Japan

Foot { Koto  
          { Perch  
          { Saito

Polina sp.  
Saito

m 103

~~1-28~~ } for 200p. - 0.12

Common

Fish

Sanguinolites

Worms

Gr. gov. mudflat

Shrimp

Jelly Fish

Chitons

1-29

1-29 + 1.9

Air 9°C  
W. 11°C

Jeff.

List of insects  
Polonica sp.  
Elaeagnus sp.  
id. sp.  
Sting sp.  
Fruit sp.  
Fruit sp.  
Fruit sp.

Worms in Pol. leucis best sheet.  
1 leafy hermit crab, in leucis.  
Papilio "

7/10/1

1-30-50

R.P. 315 P. - 0.6

Ar 8<sup>cc</sup>  
- 10<sup>cc</sup>

1-30-50

107.5

at <sup>no</sup> ~~the~~ site of  
of Rusein R.

Shell Beach

South

Goose barnacles - red.

- Chiton <sup>Suber</sup> <sup>capita</sup> <sup>capita</sup>

Pyg Helix with boreshell  
& worms in shell.

- Large Diatoma algae  
& ~~small~~ ~~small~~ ~~small~~

Tubebranch

Heron.

nest (worm tubes)

Worms

five sea whips

m 108

1-31-50

Air 7°C - wind 9°C

Rur 4<sup>00</sup> p.m. - 0.9



Shells - 13 - 14 - 15 - 16 - 17 - 18 - 19 - 20 - 21 - 22 - 23 - 24 - 25 - 26 - 27 - 28 - 29 - 30 - 31 - 32 - 33 - 34 - 35 - 36 - 37 - 38 - 39 - 40 - 41 - 42 - 43 - 44 - 45 - 46 - 47 - 48 - 49 - 50 - 51 - 52 - 53 - 54 - 55 - 56 - 57 - 58 - 59 - 60 - 61 - 62 - 63 - 64 - 65 - 66 - 67 - 68 - 69 - 70 - 71 - 72 - 73 - 74 - 75 - 76 - 77 - 78 - 79 - 80 - 81 - 82 - 83 - 84 - 85 - 86 - 87 - 88 - 89 - 90 - 91 - 92 - 93 - 94 - 95 - 96 - 97 - 98 - 99 - 100

Alcyonaria (Siphon?)

Some in the same form

Shrimps

Worms - 1 - 2 - 3 - 4 - 5 - 6 - 7 - 8 - 9 - 10 - 11 - 12 - 13 - 14 - 15 - 16 - 17 - 18 - 19 - 20 - 21 - 22 - 23 - 24 - 25 - 26 - 27 - 28 - 29 - 30 - 31 - 32 - 33 - 34 - 35 - 36 - 37 - 38 - 39 - 40 - 41 - 42 - 43 - 44 - 45 - 46 - 47 - 48 - 49 - 50 - 51 - 52 - 53 - 54 - 55 - 56 - 57 - 58 - 59 - 60 - 61 - 62 - 63 - 64 - 65 - 66 - 67 - 68 - 69 - 70 - 71 - 72 - 73 - 74 - 75 - 76 - 77 - 78 - 79 - 80 - 81 - 82 - 83 - 84 - 85 - 86 - 87 - 88 - 89 - 90 - 91 - 92 - 93 - 94 - 95 - 96 - 97 - 98 - 99 - 100

Worms for old boxes holes in shells.

Ac. fenestrata

marginata

etc

Crepidula rivularis

Phol. penita

Hyponis antiquata

Phallogodon caudell. Trus

worms in nos like Caudiflorus

Chelous

A. nitra eucrotalions

Jan 109

24.50

air 8° winter

H. 1 mi fr. Park Road

Per 4:30 P.M. - 1/1

# Shell Beach north

Hydras

Copepods? as same.

Worms (Algae) in Calcareous.

{ *Phola penita* - rock bore (shell)  
{ Worms for " " bore

Chitons

Periwinkle worms (Siphonalia)

Strongy. franciscana

cf 3 Seals fish bones & could <sup>find</sup> light lamp ground.

Porurens in Calcareous

Crab (Fuzz?)

Red camp. acil.

*A. vulva*

*A. fenestrata*

*Callinectes costata*

Chal. ... (goose)

Shrimps

~~Copepods from Hydras~~

m110

2-1-56

near Park Trails, N.

worked recently, June 1 & 3

for 5<sup>00</sup> p. -1.1

# Shell Beach

Many shells, etc.  
Bottle Stars 83

Fuzzy crab  
Pagurus in Callionyx  
Callionyx costata  
Thalassina

Margarites  
Pteropods (small)  
Shrimp  
Seg. worms  
Didemna aspera - large  
worms

Reddish-brown - red, purple or red sponge  
Octopus - small

Sponge - scarlet  
" purple  
Halimeda purpurascens  
Hydroids  
Chiton  
Bottle stars  
Sponges  
Pencil shells

M 111

2 - 2 - 50

40 feet - 50 -

off B. deep level to 1000 R.

Jeff:

Small shrimp

Small cod fish

Octopus

Need for 40% of "cod fish"

Worms - various

1 jar. Sea urchin

M 112 ✓

2-7-50

at 40-50 fathoms of  
Salmon Co.



"Jefferson"

Sea mouse

Ittys

Place of 28<sup>th</sup> Halibut

Asterocobus?

Perminium?

Medusa aequalis?

~~At birth star~~

M113

2-8-50

at 100-115' below  
N. Seneca R.

Jefferon

Red fish

Thorny fish, small

~~Dermatophyllus~~

Knobby star - Red

mill

2-9-50

at 50 fathoms  
to 115 fathoms

~~of ...~~

50

Japan

50

Skate egg

50

Shark egg <sup>Reveria</sup>  
<sub>condiformis</sub>

115

Heart dottle

50

Dermis <sup>& worms</sup>  
Cnidarian

Polinices heavy, in growth

50

Hydroid

50

Polinices

50

Polinices no collar

50

Dermis

115

Patella

110

Krabbby star fish

Mr 110

5-10-50

Dr. [unclear] [unclear]

Sent, [unclear] [unclear]

Am 10.40 with 10.00

E Beach North

Chiton  
Serpula (P. granifera)  
Haliotis - Pygospio  
Lopha  
Palaemonetes  
Teredos small. Locs

Urosalpinx  
Haliotis  
Pecten Nivalis giganteus

W 116

4-11-50

2  
some amount of ...

2743, ...  
some amount of ...



E Beach middle  
S + middle

Chelonia

Haliotis purpurina

H. wellfleetensis

Chelonia

Scaph. sp.

fish { Blenny

Clay

Water bug

Diostes leucocoma (small)

Scaph. sp. with Spring

Big fish

Eel - small

nudibranch

Crab.

Tr 117

2 - 13 - 50 ♀ 2 - 14 - 50  
3 - 14

# Stewart's Point

## Slime Eel

H. rufescens - plenty

H. willakemii

- Chiton

Starfish - *Astronotus sertuliformis*

" *Pisaster?* sp.

Orange comp. anemone

Calliostoma - <sup>costa</sup> plenty,

many

White clams for bore holes

Sea gull eggs

Hydroids

Brittle Star

*Keeniania* ( *Mitella* )

*Calliostoma* sp.

*Margarita*

no. 118

20-50 feet } 2/3/50  
                  } 2/14/50  
                  } 2/15/50

of Salina Co. to the State

# Jefferson

Polinices - old shells,  
some with quartz attached inside,  
old with Hermit crust  
some with worm in  
the hole.

Red shrimp  
Octopus  
Tridacna  
all quite

Polinices

Bath shark

Notes - Acres of shrimp were  
observed with thousands of  
birds feeding on them.

Leathery clams  
Potteria ?  
Pisaster

M. 119

2/23/50 & 2/24/50  
3/14/50

Course between Salmon C.  
& Ft. Ross, at 30-50 fath.

# Jefferson

Egg case on Pickin hole

'Pol' shell & Pagurus <sup>fung</sup>  
Spindle " & " wood

Sea Anemone on Duplex  
instrument panel  
shell part

Shrimp perch?  
Octopus

Ascidian

Shrimp, etc  
Sponges, Lingcod

Wood - Verrucaria  
Balanus etc

Incubus of *Actinoptera*  
Spine shell of *Actinoptera*  
Red Shrimp

M 120

2/25/50

Jumping rocks below  
Jones & Co. - small  
of D. H. Sant, across to  
ground



"E" Beach, So.

Hesperomus

Entedonema

Medibranche

Glucina

Isopoda

Polidida penta

Clam, bivalve

Crepidula niver

M 121

20 20' - 10

Attached to summer check  
of col.

Courtesy Lee Brown

off Bush Rock  
P. A. Journal

Journal

re

M122

2-27-56

2-28-56

Note. Slipp. in N. reef & wall.

Stewart Point  
North beach

Chitons -

*Hal. rufum*

*H. mullaleum*

*Diadema*

*Acanthina*

*Thais*

Small gastropods

M123

3/1 + 3/2

Quaternary & hard shale &

limestone in strata.

Seen in boulders in g 2 & 1

Cove & Point between  
Cross Saw Mill & Cemetery

Coral ?

Bryozoa

Chelonia

Cypris, coral

Halimeda

H. wallisii

Gastropods

7-8-49

#3

Grates

Albino R.

Spotted, red stripes, black belly.

At end of log in grass in  
evening meadow, near brook.

2:45 P.M. Sunny

#4

Grates

Yellow

Albino R.

Striped, little or no red

neck. Size.

Some other marks on top of head.

Seen at 3:15 P.M.

#5

Grates large, 7/8/50

Albino R.

Striped

Found on small under long slab.

3:20 P.M.

None #3



7-7-49

Brown Garter, Albion R

Reeds & sedge

In meadow in morning, creek

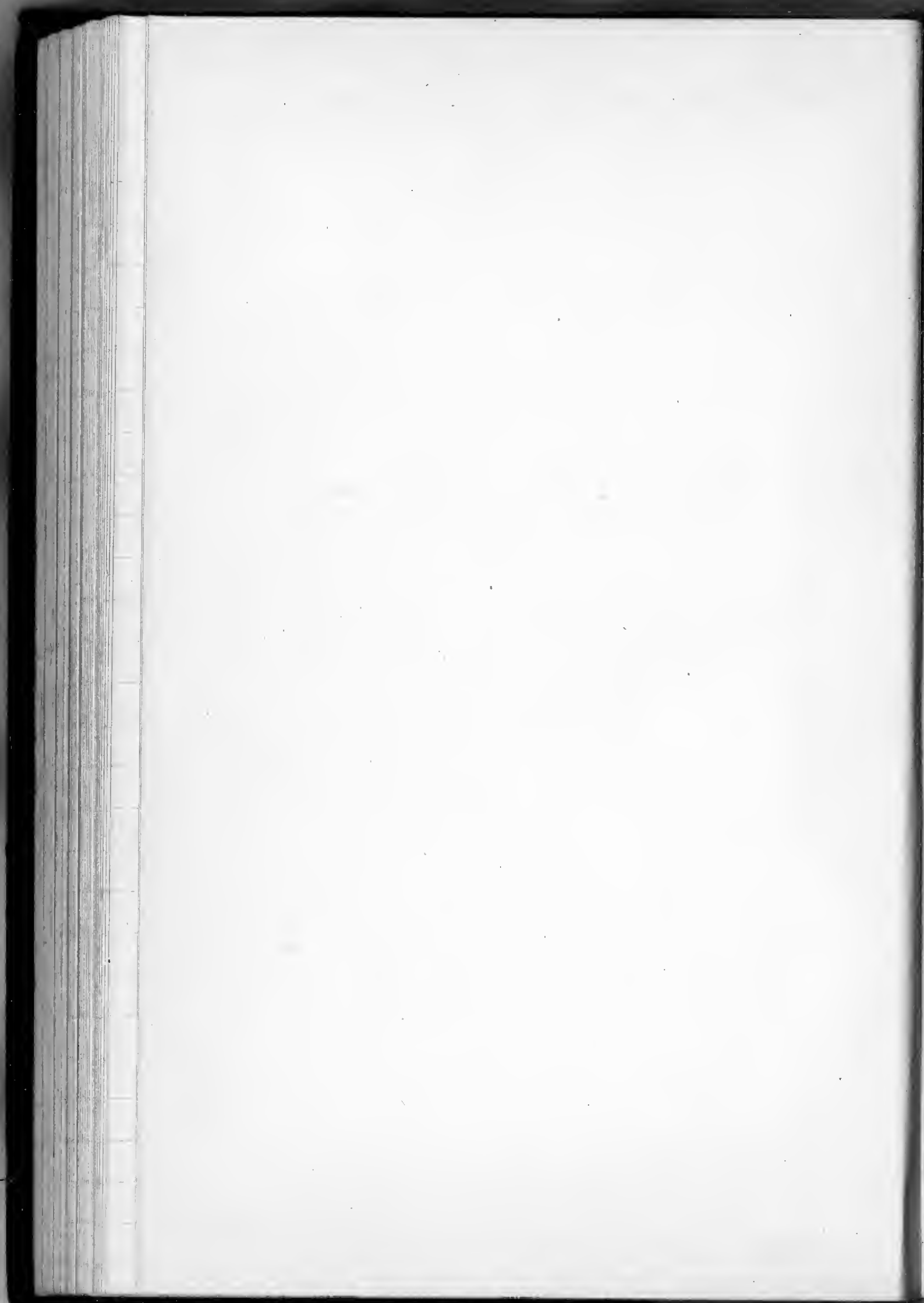
bottom, water brook, 74 ft

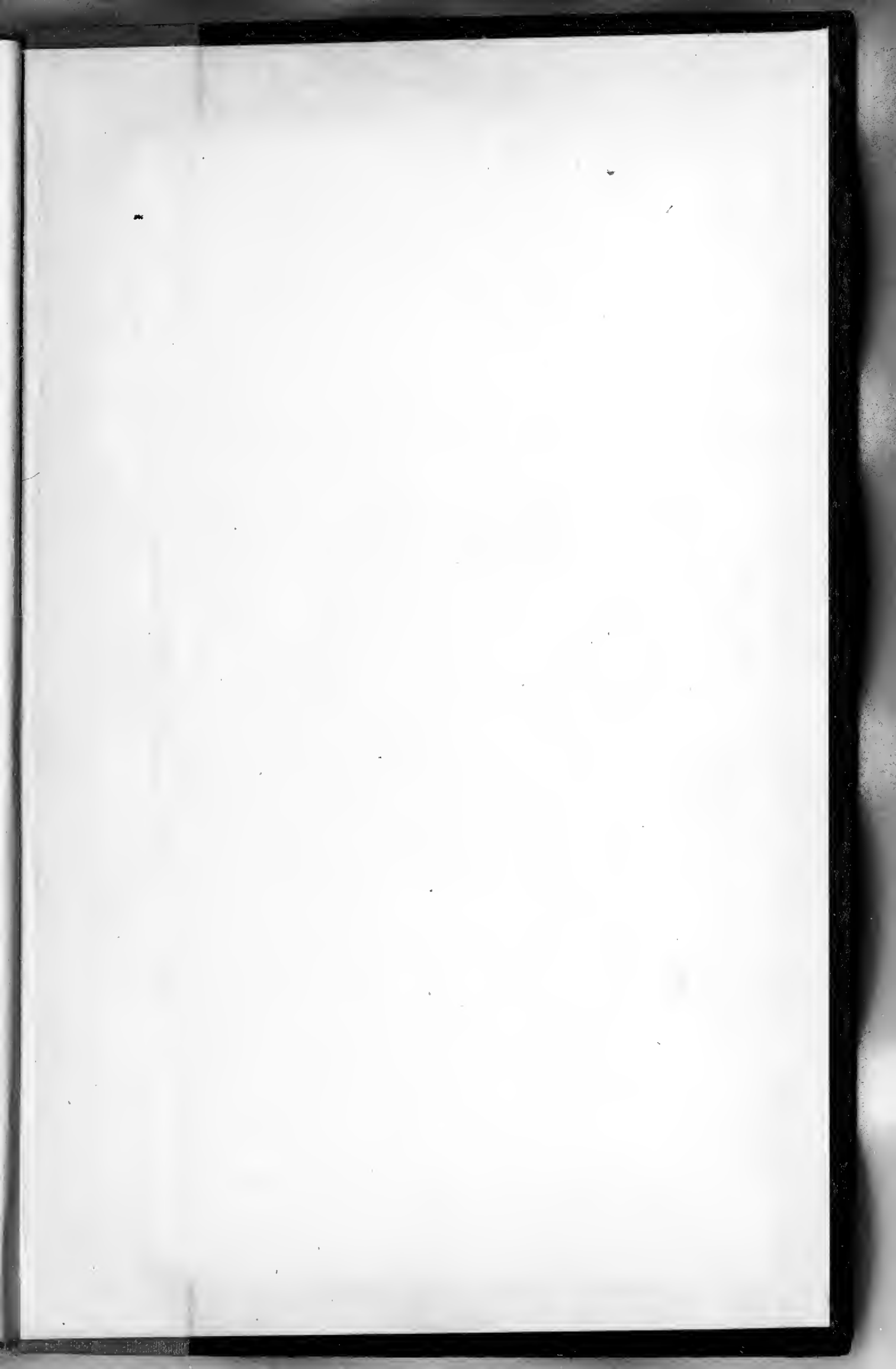
Swampy day

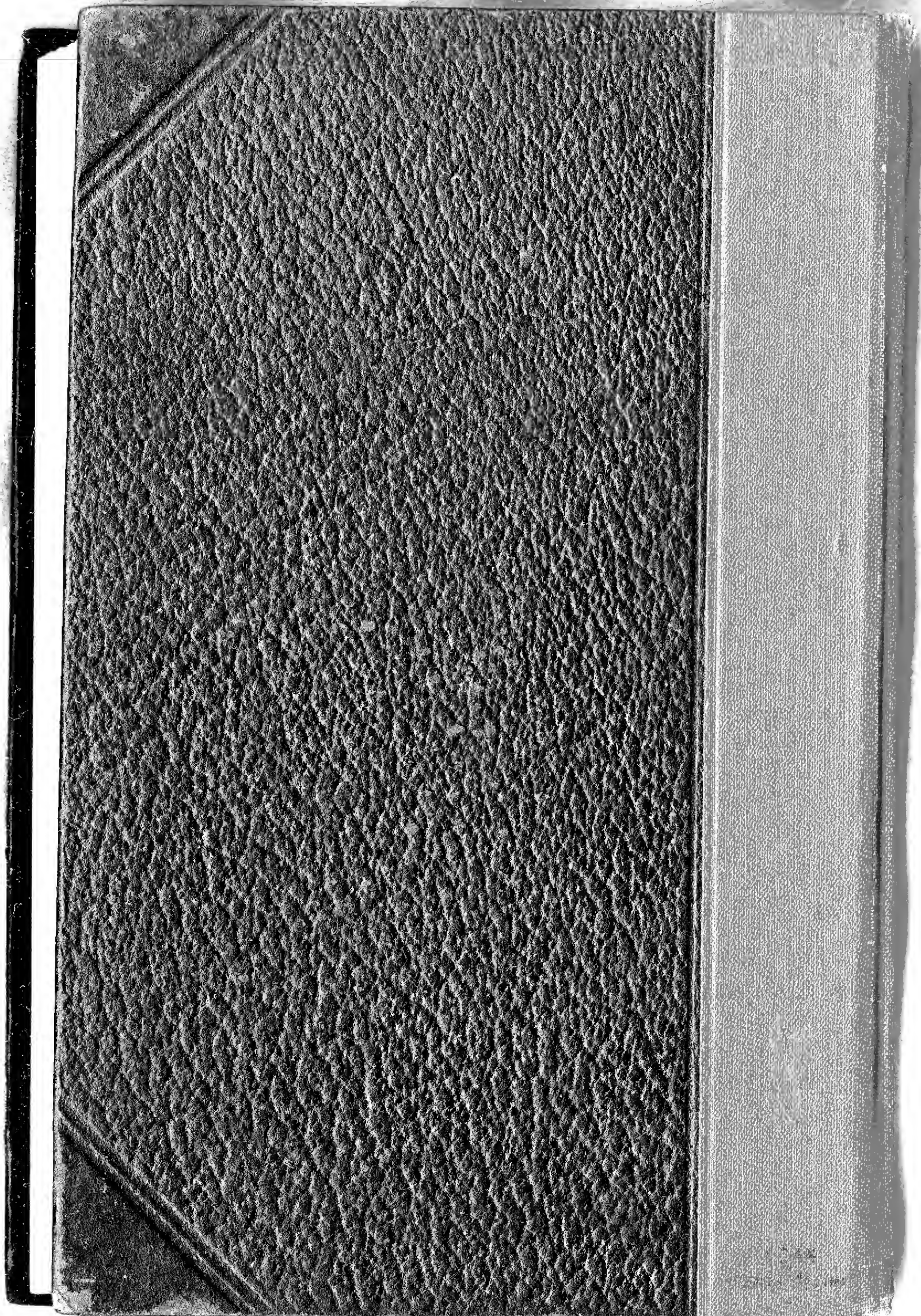
7-7-49

Red Garter, Albion R

Swampy place & Tamar in brook







m 90-49 *Hydrophilus*

(61)

m 109

"

(62)

M 117

spring stonefish

(63)

M 118

Stonefish - ordinary, ab 20

(64)

M 119

" - Purple *Collyrinus*

(65)

M 113-56

(66)

Round, red stone

M 112-56

(68)

Red, sharpish

M 119

(67)

Feather stone

M107  
(36) Ret no. <sup>grpt</sup> Barnock

M11  
(37) Simington

M101.5  
(38) Perch parasite

M101.5  
(39) " " - Sm. cl.

M123  
(40) Cornf.

A/103

(31)

Sherry ...

A/104

(32)

Sherry ...

A/108-23

(33)

Sherry ...

A/109

(34)

Sherry ...

A/109

(35)

Sherry ...



M76 - M120

(16)

Reddish brown (Brow. spot)

M101

(17)

Brown " Range spots

M101

(18)

Fuzzy " Wick. core:

M119

(19)

White Sea Anemone  
for sale

M101

(20)

Anemone for sale

M105

(11)

*Leptocottus armatus* - <sup>Shanghai</sup> ~~Shanghai~~

M107

(12)

Hagfish or Skinned eel.

M114

(13)

Sea biscuit

1/29/50

(14)

Hermit Crab - <sup>Japan</sup> ~~Japan~~ <sup>Japan</sup> ~~Japan~~

M121

(15)

Shark liver, cod caught by L.M.

M 109-50

(51)

Red siliceous sponges?

M 79-00

(52)

small of limestone 2"

M 115

(53)

to: ?

M 114

(54)

Mudcrusts - M 56

M 108

(55)

Sessile polyz?

M 97-49

(56)

Hybrid

M 96-49

(57)

Hybrid - large

M 96-49

(58)

small

M 90-49

(59)

"

M 90-49

(60)

"

M 110

#26

2/2/80  
Sponge - matt

M 78

#27

Sponge

M 123

28

Large chunk - Pteridophorella?

29

Small - "

M 109

30

Shrimp

M 107.5 Baby Sea whelk  
(21)

M 111 2nd stage (Sponge)  
(22)

M 110 1st stage  
(23)

M 110 1st stage  
(24)

M 101 Sponges  
(25)

M 104 -

#1 - Large egg

#2 - Small

M 101

3 -

M 110

4 -

Hydroid in trap

M 98-95

5 -

Insects over garage

M106 - *Aspergillus* *Plumbeus*  
sp. 6

M117:

sp. 4 - *Mucor*

" 8 - 3 color *Calliostoma*

M 98-95

sp. 9 *Fluoribolus* *Aschersonii*

M 97-49

⑩ Red *Fungi*



M120  
46

Is. ...

M190  
47

Mepitakundi (Alan - acid).

M110  
48

Brittle ... - grey & white sands

M111  
49

" " - large, red.

M123  
50

" " brown & grey bands,  
mud.

M108

(41)

Sevile group?

M185

(42)

M122

(43)

Bank, station, ... ?

M106

(44)

Holobus parvulus - large

M102

(45)

Sm. starfish